



9 IZOBRAŽEVANJE
EDUCATION

št./No 1

ZAVODI, DOMOVI IN DRUGE USTANOVE ZA NASTANITEV OTROK IN MLADOSTNIKOV S POSEBNIMI POTREBAMI,
SLOVENIJA, 2008

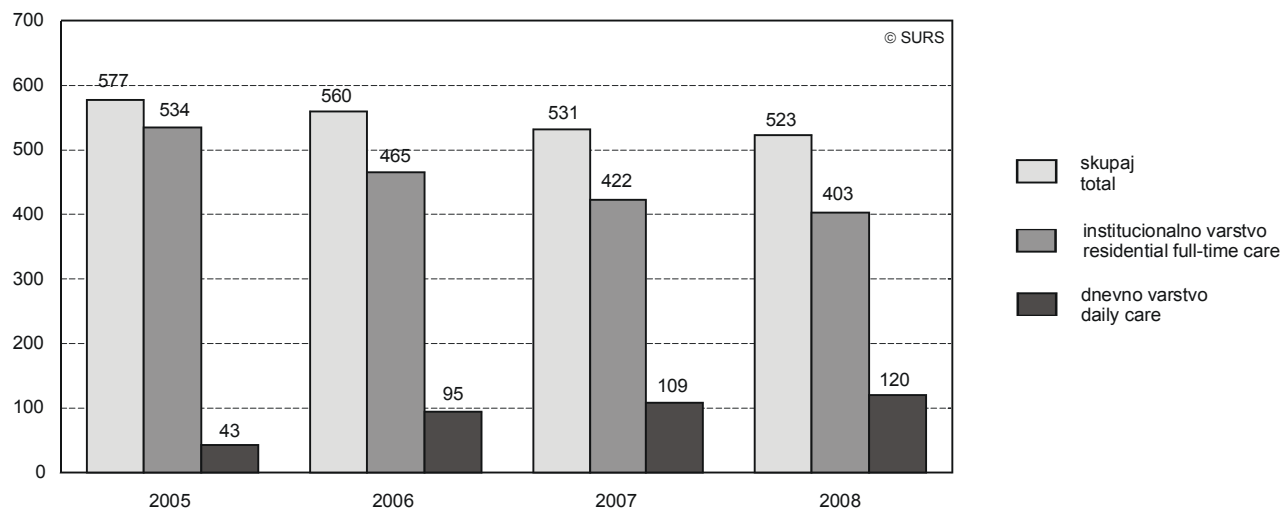
INSTITUTIONS, CHILD AND YOUTH HOMES AND OTHER ESTABLISHMENTS FOR LODGING OF CHILDREN AND YOUTH WITH SPECIAL NEEDS, SLOVENIA, 2008

- ▶ V letu 2008 je bilo v centre za usposabljanje, delo in varstvo vključenih nekaj več kot 500 otrok in mladostnikov z zmerno, s težjo in težko motnjo v duševnem razvoju, od tega 400 v domsko oskrbo, 120 otrok in mladostnikov pa je bilo vključenih v dnevno varstvo.
- ▶ Skoraj 300 otrok in mladostnikov s funkcionalnimi motnjami in 250 otrok z lažjimi ali zmernimi motnjami v duševnem razvoju je bivalo v času študija v domovih v okviru zavodov, od tega:
 - nekaj več kot 20 v domovih za slepe in slabovidne otroke in mladostnike,
 - 40 v domovih za gluhe in naglušne otroke in mladostnike,
 - malo nad 200 v domovih za gibalno ovirane otroke in mladostnike in
 - 250 v domovih za otroke in mladostnike z lažjimi ali zmernimi motnjami v duševnem razvoju.
- ▶ V zavode in domove za čustveno in vedenjsko motene otroke in mladostnike je bilo vključenih 400 otrok in mladostnikov.
- ▶ In 2008, slightly more than 500 children and youth with moderate, severe and profound mental disabilities resided in centres for training, work and protection; of whom 400 in residential full-time care and 120 in daily care.
- ▶ Almost 300 children and youth with functional disabilities and 250 children with mild or moderate mental disabilities resided for the time of their education in residential schools:
 - slightly more than 20 in residential schools for blind and weak sighted children and youth,
 - 40 in residential schools for deaf and partially deaf children and youth,
 - a bit more than 200 in residential schools for children and youth with motive impediments, and
 - 250 in homes for slightly or moderately mentally disabled children and youth.
- ▶ 400 children and youth were included in institutions and youth homes for children and youth with severe emotional and behavioural disorders.

Slika 1: Otroci v centrih za usposabljanje, delo in varstvo, Slovenija, 2005-2008

Chart 1: Children in centres for training, work and protection, Slovenia, 2005-2008

Število / number

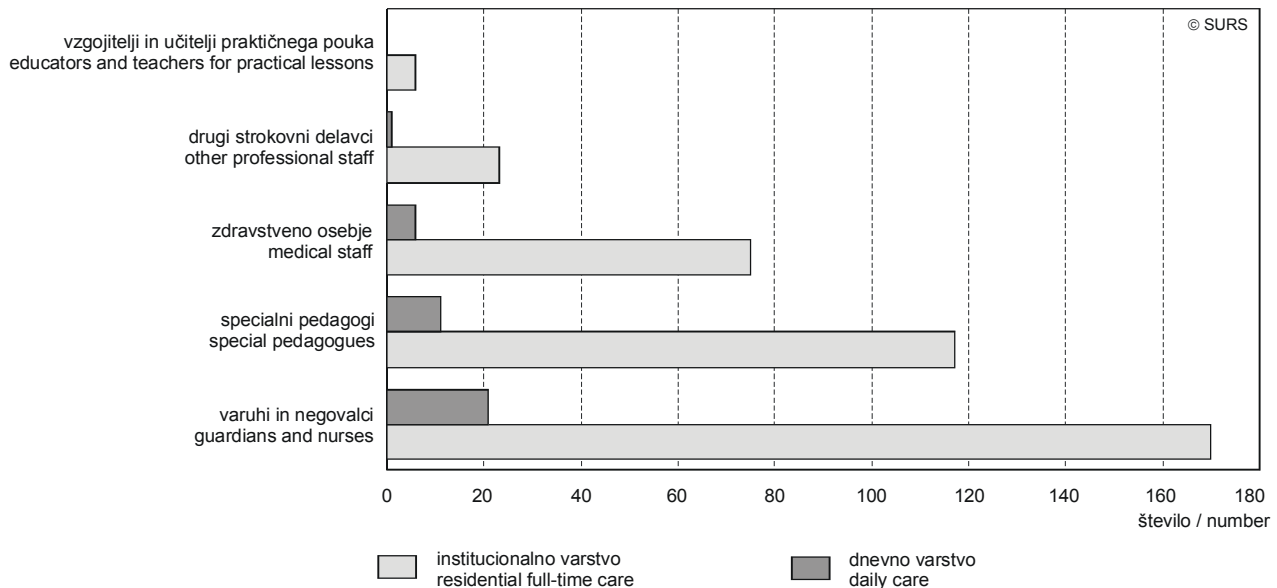


Število otrok in mladostnikov z zmerno, s težjo ali težko motnjo v duševnem razvoju, ki so vključeni v centre za usposabljanje, delo in varstvo, se v zadnjih letih rahlo zmanjšuje. Zmanjšuje pa se predvsem število tistih varovancev, ki so vključeni v institucionalno varstvo, medtem ko se število otrok in mladostnikov, ki so vključeni v dnevno varstvo, povečuje.

In recent years the number of children and youth who have moderate, severe and profound mental disabilities and are included in centres for training, work and protection has been slightly decreasing. Reduction is perceived first of all in the number of protégés in institutional full-time care, while the number of children and youth included in daily care has been on the increase.

Slika 2: Strokovno osebje, ki skrbi za otroke in mladostnike, ki bivajo v centrih za usposabljanje, delo in varstvo, Slovenija, 2008

Chart 2: Professional staff taking care of children and youth residing in centres for training, work and protection, Slovenia, 2008

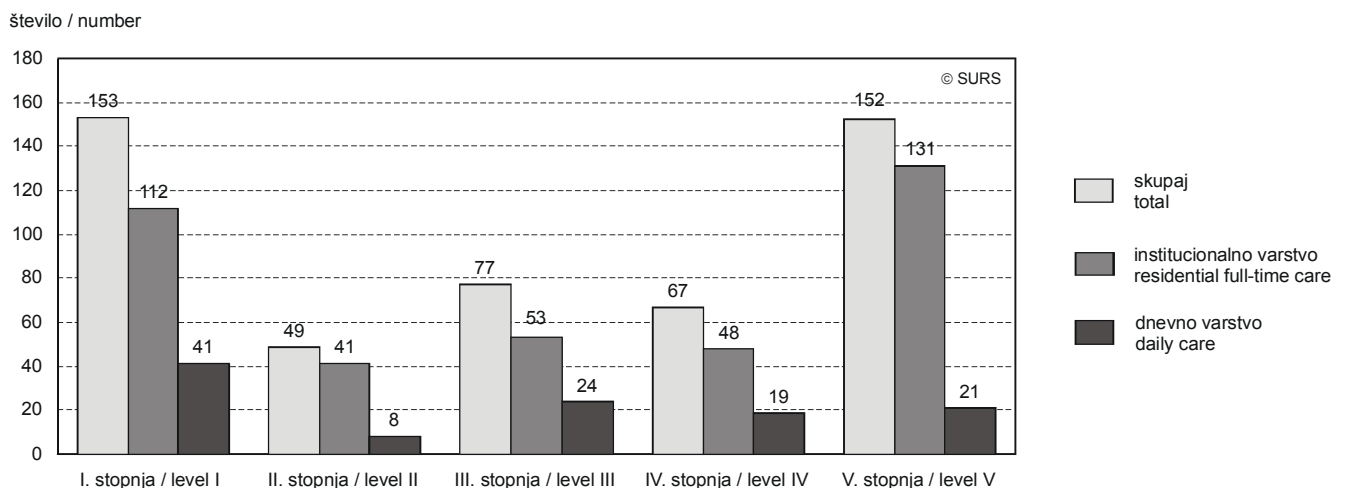


Za otroke in mladostnike z zmerno, s težjo in težko motnjo v duševnem razvoju, ki so bivali v centrih za usposabljanje, delo in varstvo, je leta 2008 skrbelo 560 strokovnih delavcev, od tega 170 varuhov in negovalcev, 117 specialnih pedagogov in 75 zdravstvenih delavcev. Za otroke in mladostnike v dnevnem varstvu je skrbelo 50 strokovnih delavcev, od tega 20 varuhov in negovalcev.

In 2008, 560 professional staff were taking care of children and youth with moderate, severe and profound mental disturbances residing in centres for training, work and protection, of whom 170 guardians, 117 special pedagogues and 75 medical staff. 50 professional staff were taking care of children and youth in daily care of whom 20 were guardians.

Slika 3: Otroci in mladostniki v domskem in dnevnem varstvu, ki v centrih obiskujejo posebne programe vzgoje in izobraževanja, Slovenija, 2008

Chart 3: Children and youth in residential full-time care and in daily care attending special education and care programs in centres, Slovenia, 2008



Otroci in mladostniki z zmerno, s težjo in težko motnjo v duševnem razvoju, ki so vključeni v domsko ali dnevno varstvo, se v okviru centrov izobražujejo po posebnih programih vzgoje in izobraževanja. Posebni program se deli na 5 stopenj, vsaka stopnja pa traja 3 leta. Obvezni del programa pokriva prve tri stopnje, IV. stopnja predstavlja podaljšan obvezni del programa, V. stopnja pa predstavlja neobvezni del programa. Po končani V. stopnji se nekateri varovanci vključijo še v program usposabljanje za življenje in delo, ki traja 5 let. Izobraževanje in usposabljanje tako lahko zaključijo pri 26. letu starosti.

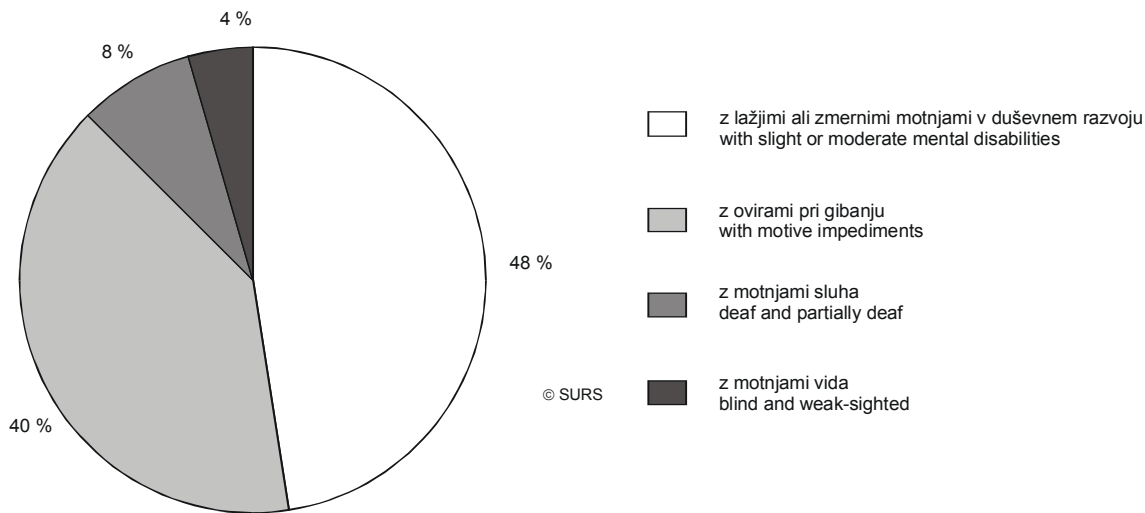
Največ varovancev centrov za usposabljanje, delo in varstvo je bilo v letu 2008 vključenih v I. stopnjo omenjenega programa, ki predstavlja prva tri leta izobraževanja, in v V. stopnjo, ki vključuje varovance, stare od 18 do 21 let.

Children and youth with moderate, severe and profound mental disabilities in residential full-time and in daily care are attending special educational programs within centres. The special educational program is divided into 5 levels, each lasts for 3 years. The first three levels are compulsory, level IV is extended compulsory level, level V is optional level. After finishing level V, some of the protégés continue their education in programs on training for life and work, which lasts 5 years. So they can complete education and training programs at age 26.

In 2007, most protégés in centres for training, work and protection were enrolled in level I of the above mentioned program, which represents the first three years of education, and in level V, which includes protégés aged eighteen to twenty-one.

Slika 4: Otroci in mladostniki s funkcionalnimi motnjami in z lažjimi in zmernimi motnjami v duševnem razvoju, ki bivajo v domovih v sklopu zavodov, po vrsti motnje, Slovenija, 2008

Chart 4: Children and youth with functional disabilities and with mild or moderate mental disabilities, residing in residential schools, by type of disturbance, Slovenia, 2008



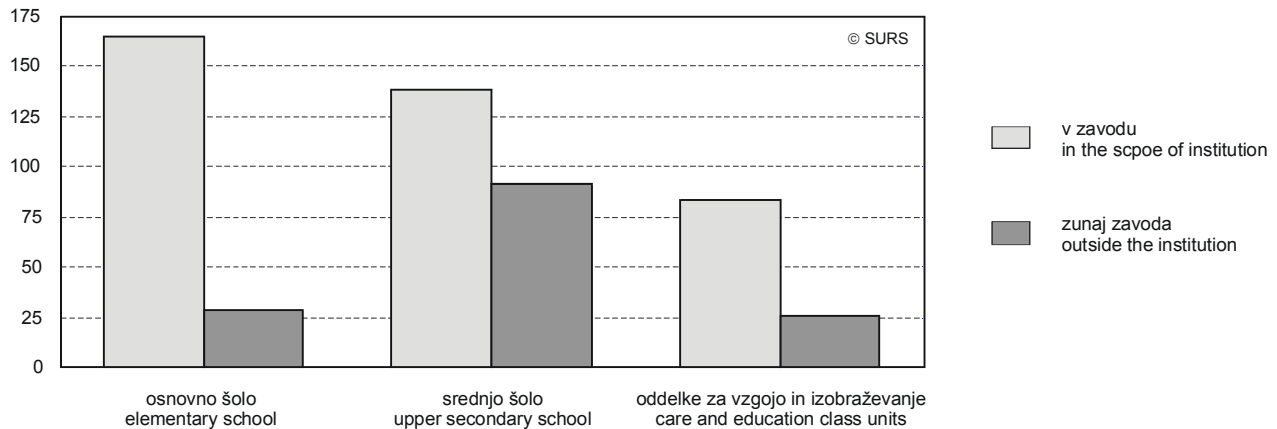
Zavodi in nekatere osnovne šole s prilagojenim programom imajo v svoji sestavi tudi domove za nastanitev otrok, ki prihajajo iz oddaljenejših krajev ali doma nimajo ustreznih pogojev za šolsko delo in se vključujejo v izobraževanje v njihovem zavodu oz. šoli. V letu 2008 je bivalo v teh domovih nekaj več kot 500 otrok in mladostnikov; največ teh otrok, 48 %, je imelo lažje ali zmerne motnje v duševnem razvoju, sledili pa so gibalno ovirani otroci in mladostniki; teh je bilo 40 %.

Institutions and some elementary schools with special curriculum comprise homes for residence for children and youth coming from remote places or for children who at home haven't suitable conditions for school work. In 2008, slightly more than 500 children and youth resided in those homes, most of them (48% children) with mild or moderate mental disabilities, followed by children and youth with motive impediments (40%).

Slika 5: Otroci in mladostniki s funkcionalnimi motnjami in z lažjimi in zmernimi motnjami v duševnem razvoju, ki bivajo v domovih v sklopu zavodov, po vrsti šole, ki jo obiskujejo, Slovenija, 2008

Chart 5: Children and youth with functional disabilities and with mild or moderate mental disabilities, residing in residential schools, by type of school they attend, Slovenia, 2008

število / number



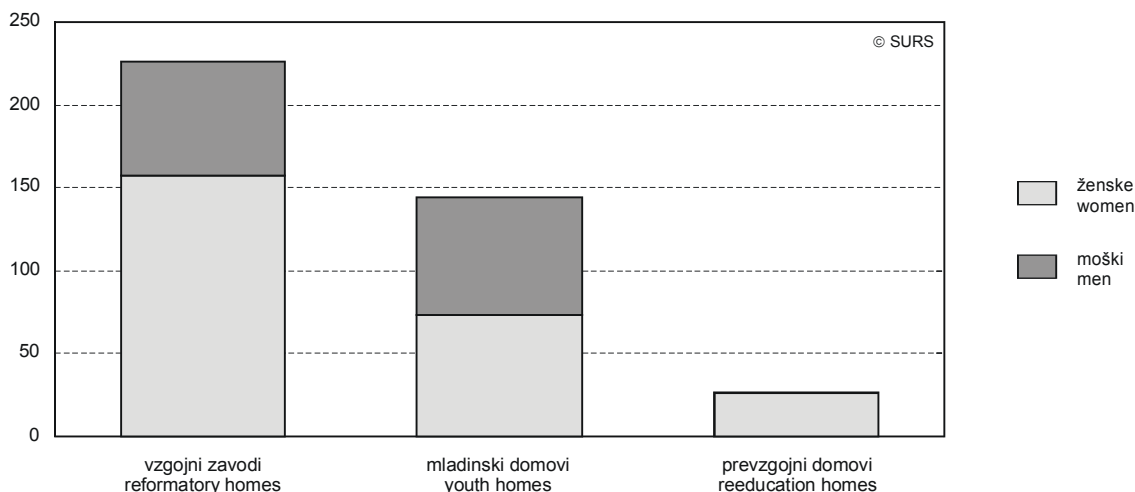
Več kot dve tretjini otrok, ki bivajo v domovih v sklopu zavodov, se v njih tudi izobražujeta. To velja za predvsem za osnovnošolsko populacijo; med te sodijo tudi otroci, ki se izobražujejo po posebnem programu v oddelkih vzgoje in izobraževanja. Med srednješolci pa se v okviru zavoda izobražuje okrog 60 % vseh otrok, ki bivajo v domovih v okviru zavodov.

More than two thirds of children residing in homes operating within the scope of institutions are attending school within the institution. This refers mostly to elementary school children, which include also children educated by special program in care and education class units. Nearly 60 % of upper secondary pupils residing in institutions are also educated in this institutions.

Slika 6: Otroci in mladostniki v vzgojnih zavodih, v mladinskih domovih in v prevzgojnem domu, Slovenija, 2008

Chart 6: Children and youth in reformatory, youth and reeducation homes, Slovenia, 2008

število / number

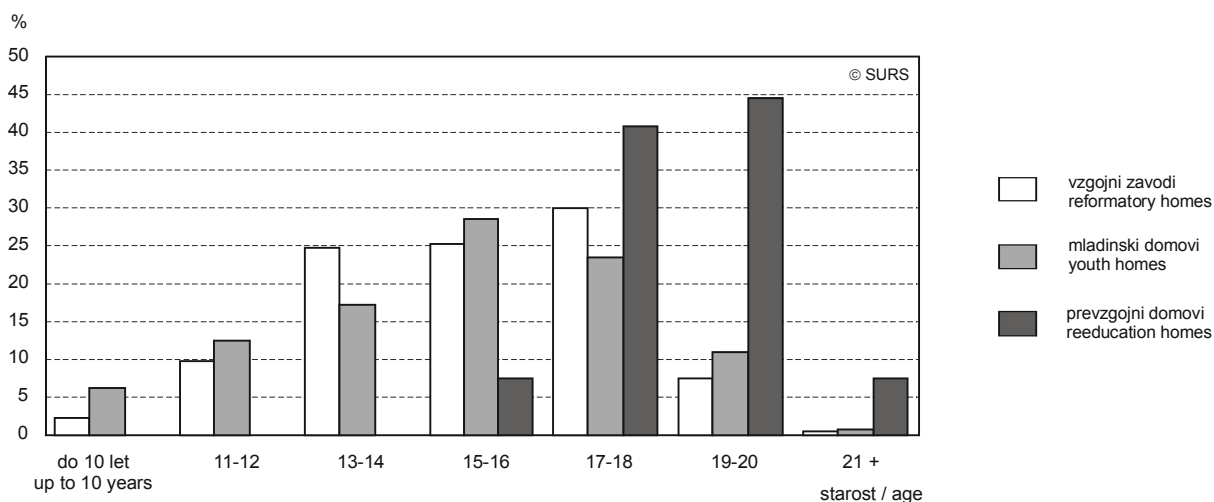


V vzgojne, prevzgojne in mladinske domove je bilo v letu 2008 vključenih blizu 400 otrok in mladostnikov. V vzgojne zavode je bilo vključenih nekaj več kot 200 otrok in mladostnikov, v mladinske domove skoraj 150, v prevzgojni dom skoraj 30. V teh tako imenovanih korekcijskih domovih prevladujejo fantje, ki običajno predstavljajo skoraj dve tretjini vseh nastanjenih. Razmerje med fanti in dekleti je bilo najbolj izenačeno v mladinskih domovih; tam so dekleta predstavljala 49 % vseh nastanjenih.

In 2008, almost 400 children and youth resided in reformatory, reeducation and youth homes. Slightly more than 200 children and youth resided in reformatory homes, nearly 150 in youth homes and almost 30 in reeducation homes. Boys, who are prevalent at these so-called correctional homes, usually represent almost two thirds of all residents. The sex ratio was most equal in youth homes, where in 2008 girls represented 49% of all residents.

Slika 7: Otroci in mladostniki v vzgojnih zavodih, v mladinskih domovih in v prevzgojnem domu po starosti, Slovenija, 2008

Chart 7: Children and youth in reformatory, youth and reeducation homes by age, Slovenia, 2008



Starostna struktura nastanjenih v vzgojnih, prevzgojnih in mladinskih domovih se razlikuje glede na vrsto doma oz. zavoda. V vzgojnih domovih so v letu 2008 prevladovali mladi med 13. in 18. letom starosti, v mladinskih domovih je bilo največ osnovnošolcev, v prevzgojnem domu pa se je starost nastanjenih gibala med 15. in 20. letom.

The age structure of residents in reformatory, reeducation and youth homes differs as to the type of home or institution. In 2008 in reformatory homes prevailed youth aged thirteen to eighteen, elementary school age pupils were prevalent in youth homes while in reeducation homes the residents were fifteen to twenty years olds.

1. Centri za usposabljanje, delo in varstvo otrok in mladostnikov z zmerno, s težjo in težko motnjo v duševnem razvoju, Slovenija, 2008
Centers for training, work and protection of children and youth with moderate, severe and profound mental disabilities, Slovenia, 2008

	Skupaj Total	Institucionalno varstvo ¹⁾ Residential full-time care ¹⁾	Dnevno varstvo Daily care	
Število centrov	5			Number of centers
Število otrok in mladostnikov	523	403	120	Number of children and youth
Ženske	217	159	58	Women
Otroci in mladostniki po starosti skupaj	523	403	120	Children and youth by age total
do 5 let	8	4	4	up to 5 years
6 do 10 let	52	24	28	6 to 10 years
11 let	6	3	3	11 years
12 let	21	12	9	12 years
13 let	13	9	4	13 years
14 let	21	14	7	14 years
15 let	21	18	3	15 years
16 let	22	18	4	16 years
17 let	29	19	10	17 years
18 let	25	22	3	18 years
19 let	41	33	8	19 years
20 let	35	27	8	20 years
21 let	29	23	6	21 years
22 let in več	200	177	23	22 years and more
Otroci in mladostniki glede na starše				Children and youth according to their parents
brez staršev	7	7		without parents
z enim od staršev	93	93		with one parent
z obema staršema	297	297		with both parents
v rejništvu	6	6		in fosterage
ni podatka	1	1		no data available
Otroci in mladostniki, ki so od 1. 1. 2008 do 31. 12. 2008 zapustili zavod				Children and youth who left the institution between 1 January 2008 and 31 December 2008
skupaj	20	20		total
odšli k staršem	2	2		they went to their parents
napoteni v drug zavod	12	12		they were referred to another institution
odšli k skrbnikom	-	-		they went to guardians
drugo	6	6		other
Otroci in mladostniki po trajanju bivanja v zavodu				Children and youth by duration of staying in the institution
do 4 leta	92	92		up to 4 years
5 - 9 let	75	75		5 - 9 years
10 - 14 let	107	107		10 - 14 years
15 - 20 let	100	100		15 - 20 years
21 let in več	29	29		21 years and more
Zaposleni skupaj	611	560	51	Employees total
ženske				women
varuhi - negovalci	191	170	21	guardians - nurses
vzgojitelji	5	5	-	educators
specialni pedagogi - defektologi	128	117	11	special pedagogues - defectologists
socialni delavci	4	4	-	social staff
psihologi	6	6	-	psychologists
učitelji praktičnega pouka	1	1	-	teacher for practical lessons
zdravstveno osebje	81	75	6	medical staff
drugi strokovni delavci	14	13	1	other professional personnel
drugo osebje	156	148	8	other personnel
vodstveno osebje	25	21	4	management staff

1) Pod institucionalnim varstvom prikazujemo podatke o otrocih in mladostnikih, ki so trajno nameščeni v centrih ali zavodih.
Under residential full-time care we present data on children and youth who are permanently housed in centres or institutions.

2. Otroci in mladostniki v domskem in dnevnem varstvu, ki obiskujejo posebne programe vzgoje in izobraževanja, Slovenija, 2008
Children and youth in residential full-time care and in daily care attending adjusted education and care programs, Slovenia, 2008

	Centri za usposabljanje, delo in varstvo Centers for training, work and protection			
	Skupaj Total	Institucionalno varstvo Residential full-time care	Dnevno varstvo Daily care	
Posebni programi - skupaj	498	385	113	Adjusted programs - total
I. stopnja	153	112	41	Level I
II. stopnja	49	41	8	Level II
III. stopnja	77	53	24	Level III
IV. stopnja	67	48	19	Level IV
V. stopnja	152	131	21	Level V

3. Zavodi z domovi za nastanitev in oskrbo otrok in mladostnikov s funkcionalnimi motnjami in z lažjimi ali zmernimi motnjami v duševnem razvoju, Slovenija, 2008
Institutions with homes for lodging and care of children and youth with functional disabilities and with mild or moderate mental disabilities, Slovenia, 2008

	Skupaj Total	Zavodi z domovi Institutions with homes				
		za slepe in slabovidne otroke in mladostnike for blind and weak-sighted children and youth	za gluhe in naglušne otroke in mladostnike for deaf and partially deaf children and youth	za gibalno ovirane otroke in mladostnike for children and youth with physical disabilities	za otroke z lažjimi ali zmernimi motnjami v duševnem razvoju for slightly or moderately mentally disabled children	
Zavodi	15	1	2	2	10	Institutions
Otroci in mladostniki - skupaj	534	24	43	213	254	Children and youth - total
Deklice	212	7	13	96	96	Girls
Otroci in mladostniki po starosti - skupaj	534	24	43	213	254	Children and youth by age - total
do 10 let	68	1	3	36	28	up to 10 years
11 let	25	-	2	8	15	11 years
12 let	22	3	-	7	12	12 years
13 let	36	1	1	13	21	13 years
14 let	35	-	3	14	18	14 years
15 let	57	5	3	11	38	15 years
16 let	55	3	6	20	26	16 years
17 let	66	1	5	23	37	17 years
18 let	58	5	4	21	28	18 years
19 let	49	3	9	23	14	19 years
20 let	28	1	1	20	6	20 years
21 let	17	1	3	10	3	21 years
22 let in več	18	-	3	7	8	22 years and more
Otroci in mladostniki glede na starše						Children and youth according to their parents
brez staršev	3	-	-	1	2	without parents
z enim od staršev	140	4	5	52	79	with one parent
z obema staršema	366	19	38	152	157	with both parents
v rejništvu	23	1	-	8	14	in fosterage
ni podatka	2	-	-	-	2	no data available
Otroci in mladostniki, ki obiskujejo šolo v zavodu	388	22	43	209	114	Children and youth attending school in the institution
osnovno šolo	165	12	9	65	79	elementary school
srednjo šolo	139	10	33	95	1	upper secondary school
oddelke za vzgojo in izobraževanje	84	-	1	49	34	care and education class units

3. Zavodi z domovi za nastanitev in oskrbo otrok in mladostnikov s funkcionalnimi motnjami in z lažjimi ali zmernimi motnjami v duševnem razvoju, Slovenija, 2008 (nadaljevanje)

Institutions with homes for lodging and care of children and youth with functional disabilities and with mild or moderate mental disabilities, Slovenia, 2008 (continued)

	Skupaj Total	Zavodi z domovi Institutions with homes				
		za slepe in slabovidne otroke in mladostnike for blind and weak-sighted children and youth	za gluhe in naglušne otroke in mladostnike for deaf and partially deaf children and youth	za gibalno ovirane otroke in mladostnike for children and youth with physical disabilities	za otroke z lažjimi ali zmernimi motnjami v duševnem razvoju for slightly or moderately mentally disabled children	
zunaj zavoda	146	2	-	4	140	outside the institution
osnovno šolo	29	-	-	-	29	elementary school
srednjo šolo	91	2	-	4	85	upper secondary school
oddelke za vzgojo in izobraževanje	26	-	-	-	26	care and education class units
Zaposleni - skupaj	322	5	13	172	132	Employees - total
ženske	268	2	9	155	102	women
vzgojitelji, pomočniki vzgojiteljev	97	4	10	25	58	educators, assistant educators
zdravstveni delavci	87	1	-	78	8	medical staff
specialni pedagogi	29	-	-	15	14	special pedagogues, defectologist
svetovalni delavci	5	-	2	2	1	advisers
drugi strokovni delavci	8	-	-	8	-	other professional personnel
vodstveni delavci	10	-	1	5	4	management staff
drugi delavci	86	-	-	39	47	other personnel

4. Zavodi in domovi za čustveno in vedenjsko motene otroke in mladostnike, Slovenija, 2008

Institutions and homes for children and youth with severe emotional and behavioural disorders, Slovenia, 2008

	Skupaj Total	Vzgojni zavodi Reformatory homes	Mladinski domovi Youth homes	Prevzgojni domovi Reeducation homes	
Zavodi in domovi - skupaj	11	7	3	1	Institutions and youth homes - total
Otroci in mladostniki - skupaj	397	226	144	27	Children and youth - total
Deklice	141	69	71	1	Girls
Otroci in mladostniki po starosti - skupaj	397	226	144	27	Children and youth by age - total
do 10 let	14	5	9	-	up to 10 years
11 let	17	9	8	-	11 years
12 let	23	13	10	-	12 years
13 let	34	22	12	-	13 years
14 let	47	34	13	-	14 years
15 let	46	23	23	-	15 years
16 let	54	34	18	2	16 years
17 let	67	38	22	7	17 years
18 let	46	30	12	4	18 years
19 let	33	14	12	7	19 years
20 let	12	3	4	5	20 years
21 let	3	-	1	2	21 years
22 let in več	1	1	-	-	22 years and more

4. Zavodi in domovi za čustveno in vedenjsko motene otroke in mladostnike, Slovenija, 2008 (nadaljevanje)
Institutions and homes for children and youth with severe emotional and behavioural disorders, Slovenia, 2008 (continued)

	Skupaj Total	Vzgojni zavodi Reformatory homes	Mladinski domovi Youth homes	Prevzgojni domovi Reeducation homes	
Deklice	141	69	71	1	Girls
do 10 let	4	-	4	-	up to 10 years
11 let	4	1	3	-	11 years
12 let	8	3	5	-	12 years
13 let	9	5	4	-	13 years
14 let	18	10	8	-	14 years
15 let	22	11	11	-	15 years
16 let	19	13	6	-	16 years
17 let	30	16	14	-	17 years
18 let	16	7	9	-	18 years
19 let	8	2	5	1	19 years
20 let	2	1	1	-	20 years
21 let	1	-	1	-	21 years
22 let in več	-	-	-	-	22 years and more
Otroci in mladostniki glede na razlog sprejema v zavod					Children and youth according to reason for acceptance in the institution
po sklepu sodišča	64	36	1	27	by the decision of the court
po odločbi centra za socialno delo	333	190	143	-	by order of the centre for social work
Otroci in mladostniki, ki so od 1. 1. 2007 do 31. 12. 2007 zapustili zavod					Children and youth who left the institution between 1 January 2007 and 31 December 2007
skupaj	173	105	56	12	total
odšli k staršem, skrbnikom, rejnikom	135	83	41	11	went to their parents, guardians, fosterage
napoteni v drug vzgojni zavod	10	6	4	-	were referred to another reformatory home
v stanovanjsko skupino	8	7	1	-	went to housing group
v prevzgojni dom	2	2	-	-	went to reeducation home
drugo	18	7	10	1	other
Otroci in mladostniki po trajanju bivanja v zavodu					Children and youth by duration of staying in the institution
do 3 mesece	47	34	9	4	up to 3 months
4-6 mesecev	62	27	30	5	4-6 months
7-12 mesecev	63	48	12	3	7-12 months
13-18 mesecev	67	38	24	5	13-18 months
19-24 mesecev	44	24	19	1	19-24 months
več kot 24 mesecev	114	55	50	9	24 months and more
Otroci in mladostniki, sprejeti v isti zavod oz. dom					Children and youth accepted in the same institution
prvič	394	224	143	27	for the first time
drugič v isti ustanovi	3	2	1	-	for the second time
trejič ali večkrat v isto ustanovo	-	-	-	-	for the third time or more

METODOLOŠKA POJASNILA

Namen statističnega raziskovanja

je statistično spremljanje otrok in mladostnikov s posebnimi potrebami, ki so v oskrbi centrov, zavodov, domov in drugih ustanov za otroke in mladostnike s posebnimi potrebami, ter zaposlenih v teh institucijah.

Enote opazovanja

so centri, zavodi, domovi in druge ustanove za vzgojo, izobraževanje, usposabljanje, delo in varstvo otrok in mladostnikov s posebnimi potrebami.

METHODOLOGICAL EXPLANATIONS

Purpose of the survey

is statistical monitoring of children and youth with special needs who are in residential care in centres, institutions, child and youth homes and other establishments for children and youth with special needs, and employees in these institutions.

Observation units

are centres, institutions, child and youth homes and other establishments for education, training, work and protection of children and youth with special needs.



Viri podatkov

so letni statistični vprašalniki SOC-ZU, ŠOL-ZU in ŠOL-MVO, ki jih pošiljamo v izpolnjevanje centrom, zavodom, domovom in drugim ustanovam za vzgojo, izobraževanje, usposabljanje, delo in varstvo otrok in mladostnikov s posebnimi potrebami. Zbrani podatki o opazovanih enotah se nanašajo na stanje 31. 12. tekočega leta.

Zajetje

je popolno.

Definicije in pojasnila

Otroci s posebnimi potrebami so po Zakonu o usmerjanju otrok s posebnimi potrebami (Ur. l. RS, št. 54/2000) otroci z motnjami v duševnem razvoju, slepi in slabovidni otroci, gluhi in naglušni otroci, otroci z govorno-jezikovnimi motnjami, gibalno ovirani otroci, dolgotrajno bolni otroci, otroci s primanjkljaji na posameznih področjih učenja ter otroci s čustvenimi in vedenjskimi motnjami, ki potrebujejo prilagojeno izvajanje vzgojnih in izobraževalnih programov (z dodatno strokovno pomočjo) ali prilagojene oziroma posebne vzgojne in izobraževalne programe.

Center je socialno varstveni zavod za usposabljanje, vzgojo in izobraževanje, zdravstveno varstvo, rehabilitacijo in nego otrok in mladostnikov z zmerno, težjo in težko motnjo v duševnem razvoju z dodatnimi motnjami.

Zavodi za otroke in mladostnike s posebnimi potrebami usposablajo in izobražujejo otroke, mladostnike in mlajše polnoletne osebe, ki zaradi motenj v duševnem in/ali telesnem razvoju potrebujejo posebne oblike vzgoje, izobraževanja in usposabljanja (Ur. l. RS, št. 12/96). V okviru zavoda je lahko tudi dom za otroke, ki jim ni bilo mogoče zagotoviti izobraževanja v kraju stalnega prebivališča.

Objavljanje rezultatov

Letno:

- Statistične informacije. Izobraževanje. Zavodi, domovi in druge ustanove za namestitvev otrok s posebnimi potrebami.
- Statistični letopis Republike Slovenije

Data sources

are annual statistical questionnaires SOC-ZU, ŠOL-ZU and ŠOL-MVO, which are sent to the centres, institutions, child and youth homes and other establishments for education, training, work and protection of children and youth with special needs. The data are collected for each observation unit as of 31 December in the current year.

Coverage

is complete.

Definitions

Children with special needs are according to the Placement of Children with Special Needs Act (OJ RS, No. 54/2000) mentally retarded children, blind and weak-sighted, deaf and partially deaf children, children with speech disturbances, children with motive impediments, children with long-term illnesses, children with a deficit in some fields of education and training, and children with emotional and behavioural disturbances who need special implementation of programmes of education and training and with additional professional help or special programmes of education and training.

Centre is social health care institution for qualification, education and training, rehabilitation and nursing of children and youth with mild, severe and profound mental disturbances with additional impairments.

Institutions for children and youth with special needs educate and train children, youth and young, disabled adults who, due to physical and/or mental handicap, require special forms of education and training (OJ RS No. 12/96). The institution can comprise also a child and youth home for children who are not in the position to be educated in the place of permanent residence.

Publishing

Annually:

- Rapid Reports. Education. Institutions, child and youth homes and other establishments for lodging of children and youth with special needs, Slovenia, 2007
- Statistical Yearbook of the Republic of Slovenia

Sestavila / Prepared by: Breda Ložar

Izdaja, založba in tisk Statistični urad Republike Slovenije, Ljubljana, Vožarski pot 12 - **Uporaba in objava podatkov dovoljena le z navedbo vira** - Odgovarja generalna direktorica mag. Irena Križman - Urednica zbirke Statistične informacije Marina Urbas - Urednica podzbirke Tatjana Škrbec - Slovensko besedilo jezikovno uredila Ivanka Zobec - Angleško besedilo jezikovno uredil Boris Panič - Naklada 35 izvodov - ISSN zbirke Statistične informacije 1408-192X - ISSN podzbirke Izobraževanje 1580-1780 - Informacije daje Informacijsko središče, tel.: (01) 241 51 04 - El. pošta: info.stat@gov.si - <http://www.stat.si>.

Edited, published and printed by the Statistical Office of the Republic of Slovenia, Ljubljana, Vožarski pot 12 - **These data can be used provided the source is acknowledged** - Director-General Irena Križman - Rapid Reports editor Marina Urbas - Subject-matter editor Tatjana Škrbec - Slovene language editor Ivanka Zobec - English language editor Boris Panič - Total print run 35 copies - ISSN of Rapid Reports 1408-192X - ISSN of subcollection Education 1580-1780 - Information is given by the Information Centre of the Statistical Office of the Republic of Slovenia, tel.: +386 1 241 51 04 - E-mail: info.stat@gov.si - <http://www.stat.si>.