

9. ZDRAVSTVO

METODOLOŠKA POJASNILA

Viri podatkov

Podatke o zdravstvu pošilja Statističnemu uradu Republike Slovenije Inštitut za varovanje zdravja Republike Slovenije. Ta jih zbere na podlagi rednih poročil izvajalcev zdravstvene dejavnosti in rednih letnih poročil o značilnostih zdravstvenih služb, ki jih izvaja posamezni izvajalec zdravstvene dejavnosti.

Podatki o zaposlenih in opravljenih urah v zunajbolnišničnem zdravstvenem varstvu so do leta 2000 izhajali iz Poročil o delu službe, od leta 2001 pa iz računalniško podprtih poročil o zunajbolnišnični zdravstveni statistiki (ZUBSTAT). Podatki o preventivnih in kurativnih obiskih v zunajbolnišničnem zdravstvenem varstvu izhajajo iz računalniško podprtih poročil o zunajbolnišnični zdravstveni statistiki (ZUBSTAT) in iz poročil o opravljenih sistematičnih pregledih šolskih otrok in mladine.

Podatki o zunajbolnišničnem zdravstvenem varstvu so prikazani po organizacijskem načelu. Zaradi tega so v tabeli 9.1 v skupinah Zdravstveno varstvo predšolskih otrok, Zdravstveno varstvo šolskih otrok in mladine in Dejavnost splošne medicine prikazani preventivni in kurativni obiski vseh treh starostnih skupin, in ki so bili opravljeni v posameznih navedenih dejavnostih. K podatkom o kurativnih obiskih v Dejavnosti splošne medicine so od leta 2004 prištet tudi podatki o kurativnih obiskih, opravljenih v Zdravstvenem varstvu delavcev oz. v zdravstveni službi medicina dela, prometa in športa.

Podatki o bolnišnicah in porodnišnicah izhajajo iz poročil o delu stacionarnega zavoda.

Podatki o zdravstvenih delavcih izhajajo iz Baze podatkov o izvajalcih (BPI).

Podatki o prijavljenih nalezljivih boleznih izhajajo iz računalniško podprtih poročil skladno s Pravilnikom o prijavi nalezljivih bolezni in posebnih ukrepih za njihovo preprečevanje in obvladovanje.

Definicije

Kurativni obisk je namenjen zdravljenju določene bolezni ali stanja. Lahko se opravi na različnih ravneh zdravstvenega varstva in na različnih strokovnih področjih. Kurativni obiski ne vključujejo svetovanja po telefonu, hišnih in triaznih obiskov.

Preventivni obisk je aktivni zdravstveni nadzor in spremljanje zdravstvenega stanja posameznika ali določenih skupin prebivalcev. Lahko se opravi na različnih ravneh zdravstvenega varstva in na različnih strokovnih področjih. Preventivni obiski ne vključujejo drugih preventivnih aktivnosti, kot so timsko delo in posveti.

Število zdravnikov, izračunano iz delovnih ur, predstavlja razmerje med sporočenim podatkom o številu opravljenih delovnih ur zdravnikov, in normativom 1 430 ur letno na zdravnika.

Bolnišnica je stacionarna ustanova, ki nudi 24-urno oskrbo in nego, diagnostiko, zdravljenje in rehabilitacijo oseb, običajno za bolezenska in kirurška stanja. V njej so zaposleni profesionalni zdravstveni delavci. Bolnišnica lahko izvaja storitve tudi ambulantno. Ločimo tri tipe: splošne, specialne in univerzitetne bolnišnice.

Splošna bolnišnica je bolnišnica, ki nudi vrsto storitev osebam vseh starostnih skupin z različnim zdravstvenim stanjem, boleznijo ali prizadetostjo in ni univerzitetna bolnišnica.

Specialna bolnišnica je bolnišnica, v kateri so primarno hospitalizirane osebe s specifično boleznijo ali prizadetostjo enega organskega sistema, ali bolnišnica, ki je namenjena za diagnostiko in zdravljenje bolezni in stanj pri osebah določene starostne skupine ali za diagnostiko in zdravljenje bolezni in stanj dolgotrajne narave.

Univerzitetna oz. učna bolnišnica (tudi: klinična) je javna ali zasebna bolnišnica, ki izvaja tudi poučevanje zdravnikov. Povezana je z univerzo in zaposluje specialiste z osnovno specializacijo ali subspecializacijo.

Sprejeti bolniki pomenijo število oseb, sprejetih na zdravljenje v bolnišnico v določenem letu, pri čemer je lahko ena oseba sprejeta večkrat v določenem letu. V tem primeru je posamezna oseba zabeležena večkrat.

HEALTH

METHODOLOGICAL EXPLANATIONS

Sources of data

Data on health care are sent to the Statistical Office of the Republic of Slovenia by the Institute of Public Health of the Republic of Slovenia, which collects them from regular reports of health care providers and regular annual reports on characteristics of health services performed by individual health care providers in the Republic of Slovenia.

Until 2000, data on persons in paid employment and hours worked in outpatient health care were collected with reports on health services, while from 2001 on they are obtained from computerised reports on outpatient health care statistics (ZUBSTAT). Data on preventive and curative consultations in outpatient health care are obtained from computerised reports on outpatient health care statistics (ZUBSTAT) and from reports on regular medical examinations of schoolchildren and youth.

Data on outpatient health care are shown by organisational principle. Therefore, in Table 9.1 health care for children aged 0-6 years, health care for schoolchildren and youth, and general practice show preventive and curative consultations in all three age groups and in individual stated activities. Data on curative consultations in general practice from 2004 include data on curative consultations in occupational health care.

Data on hospitals and maternity hospitals are from the treating institution report.

Data on health care personnel are from the database of service providers.

Data on reported cases of infectious diseases are from computerised reports prepared in accordance with the Rules on Reporting Infectious Diseases and Special Measures for Prevention and Management.

Definitions

Curative consultations are intended for treating certain diseases or conditions. They can be performed at various levels of health care and in various areas of medical science. Curative consultations do not include telephone consultations and home-based consultations.

Preventive consultations mean active health care surveillance and monitoring of the health status of individuals or certain groups of population. They can be performed at various levels of health care and in various areas of medical science. Preventive consultations do not include other preventive activities such as teamwork and other consultations.

Number of physicians, calculated from working hours, is the ratio between the actual number of hours performed by physicians and the standard of 1,430 hours per physician per year.

A hospital is a stationary institution providing 24-hour health care, diagnostics, treatment and rehabilitation of people, usually for diseases and surgical conditions. A hospital employs health care professionals and can perform services as an outpatient clinic. We distinguish between three types of hospitals: general, specialised and university hospitals.

A general hospital is a hospital that provides range of services to persons of all age groups with various health conditions, diseases or handicap and is not a university hospital.

A specialised hospital is a hospital in which persons with specific diseases or handicaps of one part of the body are hospitalised or a hospital that is intended for diagnostics and treatment of diseases and conditions of persons of a certain age group or diagnostics and treatment of long-term diseases and conditions.

A university (or teaching) hospital (also hospital clinic) is a public or private hospital that trains physicians. It closely co-operates with the university and employs specialists with basic specialisation or subspecialisation.

Data on **admitted patients** cover the number of persons admitted by the hospital in a year, taking into account that one person can be admitted several times in a year. In this case the person is registered several times.

Odpuščeni bolniki pomenijo število oseb, ki so v določenem letu zaključili zdravljenje v bolnišnici.

Bolniški dnevi pomenijo realizirane dneve zdravstvene oskrbe v bolnišnici.

Zaposleni v zdravstvu so osebe, zaposlene za nedoločen ali določen čas, tudi tiste z nepolnim (npr. polovičnim) delovnim časom, osebe, ki delajo pogodbeno, in prostovoljci. Niso pa tu upoštevane osebe, ki ne morejo biti v rednem delovnem razmerju (npr. upokojenci, ki delajo po pogodbah).

Mesto zaposlitve pomeni ustanovo, kjer je oseba zaposlena z večino svojega izkazanega delovnega časa. To pomeni, da je lahko oseba redno razporejena na delo tudi pri drugem izvajalcu, vendar je to zanemarjeno.

Šolski novinci ter učenci in dijaki, ki morajo opraviti sistematični zdravniški pregled so otroci pred vstopom v OŠ (šolski novinci), učenci, vpisani v 1., 3., 6. in 8. razred OŠ, dijaki, vpisani v 1. in 3. letnik SŠ, ter učenci, vpisani v OŠ s prilagojenim programom.

Data on **discharged patients** cover the number of persons that finished their treatment in a hospital.

Data on **hospitalization days** cover days of health care in a hospital.

Persons employed in health care are employees with temporary and fixed-duration employment contracts, including employees working part time, contract workers and volunteers. Persons who cannot enter into regular labour relations (e.g. retired persons performing contract work) are not taken into account.

Place of work is the institution in which the person is employed for most of the working time. This means that a person can be sent to work for another service provider but this is not taken into account.

Systematic health examinations for novices and pupils in elementary and upper secondary schools are carried out for children before entering elementary school (novices), children in the 1st, 3rd, 6th and 8th grade of elementary school, pupils in the 1st and 3rd year of upper secondary school, and children in schools with special curriculum.

Objavljanje

Letno: Slovenija v številkah
Statistični letopis Republike Slovenije

Publishing

Annually: Slovenia in Figures
Statistical Yearbook of the Republic of Slovenia

9.1 Zunajbolnišnično zdravstveno varstvo

Out-patient health care

	2005	2007	2008	2009	2010	2011	
Zdravstveno varstvo na primarni ravni							
<i>Health care at primary level</i>							
SKUPAJ							TOTAL
Zdravniki, izračunani iz delovnih ur	1576,8	1515,5	1505,2	1568,7	1568,0	1568,4	Physicians (full-time equivalent)
od tega: delež specialistov (%)	71,1	72,5	72,0	72,9	74,0	73,0	of which: share of physicians specialists (%)
Prebivalci na zdravnika	1269,1	1332,5	1354,9	1302,0	1306,9	1308,6	Number of people per physician
Kurativni obiski/1000 prebivalcev	4549,4	3994,6	3768,5	3836,0	3602,8	3648,0	Curative consultations per 1000 population
Preventivni obiski/1000 prebivalcev	563,4	570,4	606,4	576,4	606,0	584,1	Preventive consultations per 1000 population
Zdravstveno varstvo predšolskih otrok¹⁾							
<i>Health care for children aged 0–5 years¹⁾</i>							
Zdravniki, izračunani iz delovnih ur	181,5	165,6	168,8	162,1	166,1	155,1	Physicians (full-time equivalent)
od tega: delež specialistov (%)	84,6	87,4	84,5	89,5	88,5	87,0	of which: share of physicians specialists (%)
Otroci (0–5 let) na zdravnika, izračunanega iz delovnih ur	830,9	773,8	778,2	839,6	740,4	817,6	Number of children (0–5 years) per physician (full-time equivalent)
Kurativni obiski otrok/1000 otrok (0–5 let)	5246,1	4491,5	4271,2	4154,3	4567,9	4574,4	Curative consultations of children per 1000 children aged 0–5
Kurativni obiski mladih/1000 mladih (6–19 let)	584,3	495,4	493,0	529,1	454,0	456,1	Curative consultations of youth per 1000 youth aged 6–19
Kurativni obiski odraslih/1000 odraslih (20 let ali več)	28,2	29,0	25,7	27,2	20,8	17,6	Curative consultations of adults per 1000 adults aged 20 or over
Preventivni obiski otrok/1000 otrok (0–5 let)	1612,3	1554,9	1641,4	1668,3	1996,0	1848,3	Preventive consultations of children per 1000 children aged 0–5
Preventivni obiski mladih/1000 mladih (6–19 let)	18,3	8,9	11,0	19,8	22,7	17,2	Preventive consultations of youth per 1000 youth aged 6–19
Preventivni obiski odraslih/1000 odraslih (20 let ali več)	0,1	0,1	0,3	0,1	0,1	0,1	Preventive consultations of adults per 1000 adults aged 20 or over
Zdravstveno varstvo šolskih otrok in mladine¹⁾							
<i>Health care of schoolchildren and youth¹⁾</i>							
Zdravniki, izračunani iz delovnih ur	173,6	160,6	162,9	153,9	160,7	147,7	Physicians (full-time equivalent)
od tega: delež specialistov (%)	74,1	78,2	73,0	76,7	77,6	78,3	of which: share of physicians specialists (%)
Mladi (6–19 let) na zdravnika, izračunanega iz delovnih ur	2204,4	1680,2	1614,3	1668,8	1682,0	1802,8	Number of youth (6–19 years) per physician (full-time equivalent)
Kurativni obiski otrok/1000 otrok (0–5 let)	489,8	557,5	505,3	456,5	388,2	330,9	Curative consultations of children per 1000 children aged 0–5
Kurativni obiski mladih/1000 mladih (6–19 let)	1885,7	1727,1	1669,7	1689,4	1493,2	1518,2	Curative consultations of youth per 1000 youth aged 6–19
Kurativni obiski odraslih/1000 odraslih (20 let ali več)	184,5	160,2	167,2	152,6	148,2	140,6	Curative consultations of adults per 1000 adults aged 20 or over
Preventivni obiski otrok/1000 otrok (0–5 let)	352,6	339,6	297,6	246,0	199,4	164,5	Preventive consultations of children per 1000 children aged 0–5
Preventivni obiski mladih/1000 mladih (6–19 let)	535,0	503,2	522,6	549,7	610,9	549,1	Preventive consultations of youth per 1000 youth aged 6–19
Preventivni obiski odraslih/1000 odraslih (20 let ali več)	13,5	6,6	12,5	12,1	9,7	9,9	Preventive consultations of adults per 1000 adults aged 20 or over
Dejavnost splošne medicine¹⁾							
<i>General practice¹⁾</i>							
Zdravniki, izračunani iz delovnih ur	943,6	909,3	939,3	962,4	937,7	923,0	Physicians (full-time equivalent)
od tega: delež specialistov (%)	62,5	64,5	63,8	64,9	66,7	66,4	of which: share of physicians specialists (%)
Odrasli (20 let ali več) na zdravnika, izračunanega iz delovnih ur	1687,9	1783,2	1751,4	1713,9	1765,9	1797,9	Number of adults (aged 20 or over) per physician (full-time equivalent)
Kurativni obiski otrok/1000 otrok (0–5 let)	365,3	325,9	289,5	297,3	293,5	245,7	Curative consultations of children per 1000 children aged 0–5
Kurativni obiski mladih/1000 mladih (6–19 let)	469,7	412,9	389,5	359,4	323,4	320,5	Curative consultations of youth per 1000 youth aged 6–19
Kurativni obiski odraslih/1000 odraslih (20 let ali več)	4058,3	3503,3	3457,9	3313,1	3110,7	3183,8	Curative consultations of adults per 1000 adults aged 20 or over
Preventivni obiski otrok/1000 otrok (0–5 let)	27,9	11,1	12,5	16,1	15,9	18,1	Preventive consultations of children per 1000 children aged 0–5
Preventivni obiski mladih/1000 mladih (6–19 let)	11,0	6,5	4,7	6,5	5,9	6,9	Preventive consultations of youth per 1000 youth aged 6–19
Preventivni obiski odraslih/1000 odraslih (20 let ali več)	59,8	60,4	61,5	62,8	67,3	67,9	Preventive consultations of adults per 1000 adults aged 20 or over
Zdravstveno varstvo žensk							
<i>Women's health care</i>							
Ginekologi, izračunani iz delovnih ur	138,1	134,0	132,3	131,2	122,0	131,7	Gyneacologists (full-time equivalent)
Ženske (stare 15 let ali več) na ginekologa, izračunanega iz delovnih ur	6391,0	6138,9	6726,2	6798,1	7328,8	6796,9	Number of women (aged 15 years or over) per gyneacologist (full-time equivalent)
Medicinske sestre	202,0	171,0	192,6	184,1	167,5	191,1	Nurses

9.1 Zunajbolnišnično zdravstveno varstvo (nadaljevanje)

Out-patient health care (continued)

	2005	2007	2008	2009	2010	2011	
Zdravstveno varstvo na primarni ravni <i>Health care at primary level</i>							
Ženske (15 let ali več) na sestro, izračunano iz delovnih ur	4369,0	4810,7	4620,4	4844,9	5338,5	4683,5	Number of women (aged 15 or over) per nurse (full-time equivalent)
Kurativni obiski/1000 žensk	418,9	426,4	385,5	375,5	356,7	337,5	Curative consultations per 1000 women
Kurativni obiski v nosečnosti/1000 nosečnic	1445,1	1330,6	1719,4	1477,5	1958,2	2061,8	Curative consultations during pregnancy per 1000 pregnant women
Preventivni obiski/1000 žensk	412,8	495,2	503,3	445,3	433,8	412,7	Preventive consultations per 1000 women
Preventivni obiski v nosečnosti/1000 nosečnic	6168,7	5257,5	6141,6	5188,9	6538,3	6593,4	Preventive consultations during pregnancy per 1000 pregnant women
Zdravstveno varstvo delavcev <i>Health care of employees</i>							
Zdravniki, izračunani iz delovnih ur	113,1	105,2	102,0	104,8	103,7	103,2	Physicians (full-time equivalent)
od tega: delež specialistov (%)	88,9	88,2	94,5	93,5	97,2	96,9	of which: share of physicians specialists (%)
Zaposleni na zdravnika, izračunanega iz delovnih ur	7173,5	8209,3	8777,1	8056,9	7945,8	7772,2	Number of employees per physician (full-time equivalent)
Preventivni obiski/1000 zaposlenih	282,3	299,4	326,6	308,1	314,0	318,4	Preventive consultations per 1000 employees
Patronažno zdravstveno varstvo <i>Medical treatment and nursing of patients at home</i>							
Število kurativnih (prvih in ponovnih) obiskov v dejavnosti patronažnega zdravstvenega varstva (1000)	879,9	929,9	919,0	918,2	987,9	917,3	Number of curative visits (first and further) at community health nursing (1000)
Število prvih kurativnih obiskov v dejavnosti patronažnega zdravstvenega varstva (1000)	47,7	54,9	62,0	62,1	58,7	61,3	Number of first curative visits at community health nursing (1000)
Število preventivnih (prvih in ponovnih) obiskov v dejavnosti patronažnega zdravstvenega varstva (1000)	227,7	226,8	242,0	236,5	225,4 ²⁾	227,6	Number of preventive visits (first and further) at community health nursing (1000)
Zdravstveno varstvo na sekundarni ravni <i>Health care at secondary level</i>							
Ambulantna specialistična dejavnost <i>Out-patient specialist services</i>							
Zdravniki, izračunani iz delovnih ur	631,2	692,1	739,1	648,6	627,9	767,6	Physicians (full-time equivalent)
Prebivalci na zdravnika, izračunanega iz delovnih ur	3170,2	2917,9	2759,3	3149,0	3263,7	2674,0	Number of people per physician (full-time equivalent)
Kurativni obiski	3826599	3947232	4116737	4197369	4330958	4371389	Curative consultations
Kurativni obiski/1000 prebivalcev	1912,2	1954,7	2018,6	2055,2	2113,4	2129,8	Curative consultations per 1000 population

- 1) Od leta 2008 dalje je zaradi prilagoditve izobraževalnemu sistemu preoblikovana starostna skupina 0-6 v 0-5 let in 7-19 v 6-19 let.
Due to changes in educational programs (elementary school) age group 0-6 was transformed into age group 0-5 and age group 7-19 to age group 6-19 years.
- 2) ZD Ljubljana je za leto 2010 prijavil cca. 10.000 manj preventivnih ponovnih obiskov v patronažnem zdravstvenem varstvu.
The Health Care Centre Ljubljana reported in 2010 approximately 10,000 less preventive home visits by community nursing staff (health visitors).

Vir: Inštitut za varovanje zdravja Republike Slovenije
Source: National Institute of Public Health

9.2 Bolnišnice in porodnišnice

Hospitals and maternity hospitals

	2005	2008	2009	2010	2011	2012	
Bolnišnice in porodnišnice	29	29	29	29	29	29	Hospitals and maternity hospitals
Postelje	9666	9586	9389	9367	9493	9349	Beds
Sprejeti bolniki	351476	367719	364542	363505	374099	369733	Admitted patients
Odpuščeni bolniki	351192	367761	364398	364104	374142	370154	Outpatients treated
Bolniški dnevi (1000) ¹⁾	2545	2585	2555	2462	2465	2446	Hospitalization days (1000) ¹⁾
Zdravniki in zobozdravniki ²⁾	3011	2996	3238	3215	3389	3447	Physicians and dental physicians ²⁾
Diplomirane medicinske sestre	1600	2499	2523	3013	3236	3372	State registered nurses
Višje in srednje medicinsko osebje	8331	8289	8075	7631	7748	7802	Medical staff with high and secondary school education
Nižje medicinsko osebje	478	425	389	395	528	507	Medical staff with elementary education
Drugo medicinsko osebje	962	1128	1031	1081	1404	1155,5	Other medical staff
Splošne in klinične bolnišnice³⁾	18	18	18	18	18	18	General and clinical hospitals³⁾
Postelje	8053	8077	7945	7896	8008	7900	Beds
Sprejeti bolniki	323944	337878	334727	333405	343861	339893	Admitted patients
Odpuščeni bolniki	323595	337886	334551	334061	343985	339721	Outpatients treated
Bolniški dnevi (1000) ¹⁾	2115	2173	2146	2051	2048	2027	Hospitalization days (1000) ¹⁾
Zdravniki in zobozdravniki ²⁾	2839	2809	3042	3021	3185	3233,5	Physicians and dental physicians ²⁾
Diplomirane medicinske sestre	1504	2327	2337	2809	3013	3133	State registered nurses
Višje in srednje medicinsko osebje	7607	7557	7365	6943	7047	7120	Medical staff with high and secondary school education
Nižje medicinsko osebje	385	345	310	317	462	445	Medical staff with elementary education
Drugo medicinsko osebje	829	953	856	889	1200	944	Other medical staff

9.2 Bolnišnice in porodnišnice (nadaljevanje)

Hospitals and maternity hospitals (continued)

	2005	2008	2009	2010	2011	2012	
Porodnišnice⁴⁾	2	2	2	2	2	2	Maternity hospitals⁴⁾
Postelje	145	116	116	140	140	140	Beds
Sprejete nosečnice	9337	10736	11025	10860	10767	10433	Admitted patients
Odpuščene ženske	9335	10722	11043	10849	10769	10439	Outpatients treated
Bolniški dnevi (1000) ¹⁾	29	27	24	31	31	31	Hospitalization days (1000) ¹⁾
Zdravniki	22	25	23	25	29	32,5	Physicians
Diplomirane medicinske sestre	19	35	46	50	55	58	State registered nurses
Višje in srednje medicinsko osebje	78	75	64	63	62	61	Medical staff with high and secondary school education
Nižje medicinsko osebje	-	-	-	-	-	-	Medical staff with elementary education
Drugo medicinsko osebje	4	4	2	2	2	2	Other medical staff
Bolnišnice za pljučne bolezni	2	2	2	2	2	2	Hospitals for pulmonary diseases
Postelje	195	214	207	216	224	192	Beds
Sprejeti bolniki	5004	5223	4977	5180	5383	5303	Admitted patients
Odpuščeni bolniki	5011	5239	4991	5183	5372	5291	Outpatients treated
Bolniški dnevi (1000) ¹⁾	62	65	66	67	67	65	Hospitalization days (1000) ¹⁾
Zdravniki	24	22	20	19	26	29	Physicians
Diplomirane medicinske sestre	13	31	31	34	38	43	State registered nurses
Višje in srednje medicinsko osebje	136	145	150	143	150	145	Medical staff with high and secondary school education
Nižje medicinsko osebje	1	5	4	5	1	1	Medical staff with elementary education
Drugo medicinsko osebje	6	11	12	21	17	25	Other medical staff
Bolnišnice za duševne bolezni	4	4	4	4	4	4	Hospitals for mental diseases
Postelje	813	724	666	660	671	667	Beds
Sprejeti bolniki	5066	5149	5140	5223	5089	5292	Admitted patients
Odpuščeni bolniki	5102	5187	5145	5243	4993	5279	Outpatients treated
Bolniški dnevi (1000) ¹⁾	221	206	209	199	195	201	Hospitalization days (1000) ¹⁾
Zdravniki	62	63	69	67	72	74	Physicians
Diplomirane medicinske sestre	31	54	57	63	63	67	State registered nurses
Višje in srednje medicinsko osebje	249	255	238	230	242	242	Medical staff with high and secondary school education
Nižje medicinsko osebje	58	42	44	44	35	33	Medical staff with elementary education
Drugo medicinsko osebje	26	39	41	43	47	45	Other medical staff
Centri za rehabilitacijo	1	1	1	1	1	1	Rehabilitation centres
Postelje	200	200	200	200	200	200	Beds
Sprejeti bolniki	1954	2061	2133	2058	2112	2054	Admitted patients
Odpuščeni bolniki	1983	2058	2127	2020	2111	2104	Outpatients treated
Bolniški dnevi (1000) ¹⁾	60	54	54	53	55	54	Hospitalization days (1000) ¹⁾
Zdravniki	28	38	38	39	35	35	Physicians
Diplomirane medicinske sestre	12	15	16	15	17	17	State registered nurses
Višje in srednje medicinsko osebje	102	106	104	99	99	95	Medical staff with high and secondary school education
Nižje medicinsko osebje	29	28	26	25	26	26	Medical staff with elementary education
Drugo medicinsko osebje	79	97	95	104	116	116	Other medical staff
Ortopedske bolnišnice⁵⁾	2	2	2	2	2	2	Orthopedic hospitals⁵⁾
Postelje	260	255	255	255	250	250	Beds
Sprejeti bolniki	6171	6672	6540	6779	6887	6758	Admitted patients
Odpuščeni bolniki	6166	6669	6541	6748	6912	7320	Outpatients treated
Bolniški dnevi (1000) ¹⁾	58	60	56	61	69	68	Hospitalization days (1000) ¹⁾
Zdravniki	36	39	46	44	43	43	Physicians
Diplomirane medicinske sestre	21	37	36	42	50	54	State registered nurses
Višje in srednje medicinsko osebje	159	151	154	153	149	139	Medical staff with high and secondary school education
Nižje medicinsko osebje	5	5	5	4	4	2	Medical staff with elementary education
Drugo medicinsko osebje	18	24	25	22	22	24	Other medical staff

1) Brez enodnevni in dolgotrajnih dnevni obravnave.
Excluding daily and long daily treatment.

2) Všteti so tudi pripravniki.
Trainees are also included.

3) Podatki o bolnišnici za otroke v Stari Gori pri Novi Gorici so prišteti k podatkom o splošnih bolnišnicah. Od leta 2004 vključeni tudi podatki Diagnostičnega centra Bled in MC Medicor.
The data on children's hospital Stara Gora near Nova Gorica are added to the data on general hospitals. Since 2004 also the data on the Diagnostic Centre Bled and MC Medicor (Izola) are included.

4) Brez porodniških oddelkov splošnih bolnišnic.
Excluding obstetric departments in general hospitals.

5) Upoštevan je tudi Center za zdravljenje boleznih otrok Šentvid pri Stični.
Also the Institution for Rheumatic and Heart Convalescents Šentvid pri Stični is included.

Vir: Inštitut za varovanje zdravja Republike Slovenije
Source: National Institute of Public Health

9.3 Zdravstveni delavci in sodelavci, zaposleni v zdravstvu, po izobrazbi in mestu zaposlitve, 2011
Health care personnel and co-workers by education and place of employment, 2011

	Skupaj <i>Total</i>	Skupaj zdravstvo <i>Total health care</i>	Osnovno zdravstvo <i>Basic health care</i>		Specialne ambulante <i>Specialised dispensaries</i>		Splošne bolnišnice <i>General hospitals</i>	Specialne bolnišnice <i>Specialised hospitals</i>		Klinike in inštituti <i>Clinics and institutes</i>	
			zdravstveni domovi <i>health care centres</i>	zasebni izvajalci <i>private institutions</i>	javni zavodi <i>public institutions</i>	zasebni izvajalci <i>private institutions</i>		javni zavodi <i>public institutions</i>	zasebni izvajalci <i>private institutions</i>		
SKUPAJ	47440	44987	7896	3422	309	1065	7257	3017	48	10438	TOTAL
Visoka izobrazba	14213	12920	2832	1309	167	392	2368	943	11	2735	University education
Zdravniki	5272	5121	1235	431	49	279	1053	338	7	1539	Physicians
specialisti	3874	3786	897	340	45	275	700	272	6	1094	specialization
na specializaciji	1080	1063	219	53	3	3	320	52	-	391	resident
brez specializacije	318	272	119	38	1	1	33	14	1	54	general practitioner
sekundariji	-	-	-	-	-	-	-	-	-	-	secondary
pripravniki	138	137	4	3	-	2	66	1	-	61	intern
Zobozdravniki	1319	1280	485	711	-	58	4	-	-	19	Dentists
specialisti	196	173	56	57	-	45	2	-	-	12	specialization
na specializaciji	32	27	11	5	-	3	2	-	-	5	resident
zobozdravniki	1091	1080	418	649	-	10	-	-	-	2	dentists
pripravniki	41	41	28	5	-	8	-	-	-	-	intern
Farmacevti	1808	1131	9	-	1	1	41	23	2	78	Pharmacists
specialisti	100	89	3	-	1	-	15	6	-	17	specialization
na specializaciji	22	15	-	-	-	-	2	2	-	5	resident
farmacevti	1686	1027	6	-	-	1	24	15	2	56	pharmacists
pripravniki	25	9	-	-	-	-	2	-	-	-	intern
Dipl. medicinska sestra	3295	3188	717	109	79	29	923	279	1	731	State registered nurse
Dipl. sanitarni inženir	210	101	2	-	-	-	4	3	-	3	Bachelor of sanitary engineering
Drugi zdravstveni delavci ¹⁾	1480	1341	258	46	17	9	288	200	1	216	Other health care personnel ¹⁾
Zdravstveni sodelavci ²⁾	829	758	126	12	21	16	55	100	-	149	Health co-workers ²⁾
Višja izobrazba	2578	2498	580	186	34	46	313	138	4	827	Higher non-university education
medicinske sestre	1346	1312	361	74	15	28	176	74	3	509	state registered nurse
inž. farmacije	52	44	5	-	4	-	2	4	-	19	pharmaceutical engineer
fizioterapevti	579	573	116	90	8	2	61	19	-	129	physiotherapist
inž. radiologije	248	247	49	2	3	13	53	22	1	102	radiol. engineer
delovni terapevti	135	130	6	2	1	1	4	14	-	38	occupational therapist
sanitarni inženir	89	66	4	-	-	-	3	1	-	11	sanitary engineer
višji dentisti	14	14	11	2	-	1	-	-	-	-	dentist
inž. med. biokemije	6	6	2	-	-	-	3	-	-	-	medical biochemistry engineer
inž. zobne protetike	9	8	1	7	-	-	-	-	-	-	dental prosthetics engineer
inž. ortotike in protetike	3	3	1	1	-	-	-	-	-	1	orthotics and prosthetics engineer
višji zobni tehniki	5	5	1	4	-	-	-	-	-	-	dental technician
višji laboratorijski tehniki	43	43	14	-	2	-	7	2	-	15	laboratory technician
drugi	49	47	9	4	1	1	4	2	-	3	other
pripravniki - skupaj	1	1	-	-	-	-	-	-	-	-	interns - total
Srednja izobrazba	15582	14722	3087	1450	80	339	2579	846	11	3429	Upper secondary education
zdravstveni tehniki ³⁾	12814	12607	2569	951	53	321	2407	780	10	3166	state enrolled nurse ³⁾
laboratorijski tehniki	709	652	278	9	19	5	81	44	1	172	laboratory technician
zobozdravstveni tehniki	754	711	199	481	1	12	-	-	-	16	dental technician
farmaceutski tehniki	866	607	3	-	-	-	41	15	-	68	pharmaceutical technician
drugi	439	145	38	9	7	1	50	7	-	7	other
pripravniki - skupaj	502	500	151	5	-	-	53	13	-	35	interns - total
Nižja izobrazba	3211	3170	65	206	-	65	121	79	5	464	Primary education
bolničarji	26	26	-	-	-	-	4	-	-	1	nursing auxiliary
drugi	3185	3144	65	206	-	65	117	79	5	463	other
Nezdravstveni delavci	11856	11677	1332	271	28	223	1876	1011	17	2983	Other workers
visoka izobrazba	1252	1209	124	19	14	12	157	103	-	372	university education
višja izobrazba	1102	1071	126	66	2	45	115	105	4	186	higher non-university education
srednja izobrazba	3261	3200	425	153	11	119	644	300	13	325	upper secondary education
drugi	6241	6197	657	33	1	47	960	503	-	2100	other education

9.3 Zdravstveni delavci in sodelavci, zaposleni v zdravstvu, po izobrazbi in mestu zaposlitve, 2011 (nadaljevanje)

Health care personnel and co-workers by education and place of employment, 2011 (continued)

	Zdravilišča Spas	Lekarne Pharmacies		IVZ in ZVZ Institute of Public Health and Institute for Health Care	ZZPS in ZPIZ Institute of Health Insur. of Slovenia and Inst. of Pens. and Disab. Insur. of Slovenia	Upravni organi in ministrstva Admini- strative bodies and ministries	Socialni zavodi Social institutions	Izobraže- valni zavodi Education institutions	Farma- cevtska industrija Pharma- ceutical industry	Drugo Others	TOTAL
		javne public	zasebne private								
SKUPAJ	1966	1483	336	910	55	167	6785	757	1169	360	
Visoka izobrazba	109	746	224	378	55	119	651	513	578	83	University education
Zdravniki	35	-	-	102	50	16	3	99	25	11	Physicians
specialisti	30	-	-	77	48	13	2	62	3	10	specialization
na specializaciji	2	-	-	20	-	2	-	9	5	1	resident
brez specializacije	3	-	-	5	2	1	1	28	17	-	general practitioner
sekundariji	-	-	-	-	-	-	-	-	-	-	secondary
pripravniki	-	-	-	-	-	-	-	-	1	-	intern
Zobozdravniki	-	-	-	-	3	-	-	35	1	3	Dentists
specialisti	-	-	-	-	1	-	-	23	-	-	specialization
na specializaciji	-	-	-	-	1	-	-	5	-	-	resident
zobozdravniki	-	-	-	-	1	-	-	7	1	3	dentists
pripravniki	-	-	-	-	-	-	-	-	-	-	intern
Farmacevti	-	744	224	6	2	4	-	136	515	22	Pharmacists
specialisti	-	31	14	2	-	-	-	2	4	5	specialization
na specializaciji	-	4	2	-	-	-	-	-	1	6	resident
farmacevti	-	709	208	4	2	4	-	134	510	11	pharmacists
pripravniki	-	6	1	-	-	-	-	-	16	-	intern
Dipl. medicinska sestra	12	1	-	25	-	6	282	86	5	10	State registered nurse
Dipl. sanitarni inženir	-	-	-	86	-	88	3	14	5	2	Bachelor of sanitary engineering
Drugi zdravstveni delavci ¹⁾	57	-	-	17	-	1	232	99	25	14	Other health care personnel ¹⁾
Zdravstveni sodelavci ²⁾	5	1	-	142	-	4	131	44	2	21	Health co-workers ²⁾
Višja izobrazba	77	4	1	58	-	9	230	50	8	13	Higher non-university education
medicinske sestre	7	-	-	6	-	1	59	25	4	4	state registered nurse
inž. farmacije	-	4	1	5	-	-	-	4	3	1	pharmaceutical engineer
fizioterapevti	63	-	-	2	-	-	83	2	-	4	physiotherapist
inž. radiologije	1	-	-	-	-	-	1	1	-	-	radiol. engineer
delovni terapevti	5	-	-	-	-	-	59	2	1	2	occupational therapist
sanitarni inženir	-	-	-	42	-	8	5	13	-	2	sanitary engineer
višji dentisti	-	-	-	-	-	-	-	-	-	-	dentist
inž. med. biokemije	1	-	-	-	-	-	-	-	-	-	medical biochemistry engineer
inž. zobne protetike	-	-	-	-	-	-	-	1	-	-	dental prosthetics engineer
inž. ortotike in protetike	-	-	-	-	-	-	-	-	-	-	orthotics and prosthetics engineer
višji zobni tehniki	-	-	-	-	-	-	-	-	-	-	dental technician
višji laboratorijski tehniki	-	-	-	3	-	-	-	-	-	-	laboratory technician
drugi	-	-	-	-	-	-	23	2	-	-	other
pripravniki - skupaj	-	-	-	-	-	-	1	-	-	-	interns - total
Srednja izobrazba	114	406	68	86	-	34	2227	139	557	130	Upper secondary education
zdravstveni tehniki ³⁾	111	-	2	35	-	32	2202	60	23	92	state enrolled nurse ³⁾
laboratorijski tehniki	2	1	-	39	-	1	1	50	3	3	laboratory technician
zobozdravstveni tehniki	-	1	-	-	-	1	1	20	2	20	dental technician
farmaceutski tehniki	-	404	66	9	-	-	1	5	239	15	pharmaceutical technician
drugi	1	-	-	3	-	-	22	4	290	-	other
pripravniki - skupaj	8	15	2	2	-	-	216	-	-	2	interns - total
Nižja izobrazba	230	5	13	2	-	-	1915	-	-	41	Primary education
bolničarji	-	-	-	-	-	-	21	-	-	-	nursing auxiliary
drugi	230	5	13	2	-	-	1894	-	-	41	other
Nezdravstveni delavci	1436	322	30	386	-	5	1762	55	26	93	Other workers
visoka	117	50	2	171	-	4	68	36	1	2	university education
višja	112	58	4	44	-	-	204	16	7	8	higher non-university education
srednja	483	74	18	128	-	1	507	3	10	47	upper secondary education
drugi	724	140	6	43	-	-	983	-	8	36	other education

1) Drugi zdravstveni delavci - vsi ostali zdravstveni delavci, ki se nahajajo v Nomenklaturi poklicev za dejavnost zdravstvenega varstva.
Other health care personnel - all other health professionals which are listed in the Nomenclature of professions in health care.

2) Zdravstveni delavci - vsak delavec, ki ima končano šolo naravoslovne smeri (kemija, biologija ali fizika), razen farmacevtov.
Health care personnel - all employees with a degree in natural sciences (chemistry, biology or physics), except for pharmacists.

3) Vštete so tudi babice.
Included are also midwives.

Vir: Inštitut za varovanje zdravja Republike Slovenije
Source: National Institute of Public Health

9.4 Prijavljeni primeri nalezljivih bolezni
Reported cases of infectious diseases

	2005	2008	2009	2010	2011	2012	
Črevesna obolenja							Intestinal diseases
Tifus in paratifus zboleli	0	4	1	6	0	2	<i>Typhoid and paratyphoid fever</i> cases
umrli	-	1	-	-	-	-	deaths
Salmoneloza zboleli	1519	1090	626	347	400	401	<i>Salmonella infection</i> cases
umrli	1	2	-	-	5	-	deaths
Griza zboleli	33	44	42	31	20	26	<i>Shigellosis</i> cases
umrli	-	-	-	-	-	-	deaths
Rotaviroza zboleli	1671	2070	1644	1593	2206	1400	<i>Rotaviral enteritis</i> cases
umrli	-	-	-	-	1	-	deaths
Botulizem zboleli	1	0	0	2	0	2	<i>Botulism</i> cases
umrli	-	-	-	-	-	-	deaths
Kampilobakterioza zboleli	1088	888	921	999	986	934	<i>Campilobacter enteritis</i> cases
umrli	-	-	1	-	-	-	deaths
Enterocolitis zboleli	8816	13401	13591	14217	13452	14588	<i>Enterocolitis</i> cases
umrli	-	1	1	-	3	1	deaths
Hepatitis A zboleli	12	17	12	9	12	11	<i>Hepatitis A</i> cases
umrli	-	-	-	-	-	-	deaths
Bolezni, proti katerim cepimo							Diseases against which people are immunised
Oslovski kašelj zboleli	85	181	442	611	284	178	<i>Pertussis</i> cases
umrli	-	-	-	-	-	-	deaths
Ošpice zboleli	-	-	-	2	22	-	<i>Morbilli</i> cases
umrli	-	-	-	-	-	-	deaths
Rdečke zboleli	-	-	-	-	-	-	<i>Rubella</i> cases
umrli	-	-	-	-	-	-	deaths
Mumps zboleli	13	32	27	5	4	8	<i>Parotitis epidemica</i> cases
umrli	-	-	-	-	-	-	deaths
Respiratorna obolenja							Respiratory diseases
Norice zboleli	9178	10697	13060	9087	12306	12631	<i>Varicella</i> cases
umrli	-	-	-	-	-	-	deaths
Škrlatinka zboleli	1785	4186	4084	3269	2983	3368	<i>Scarlatina</i> cases
umrli	-	-	-	-	-	-	deaths
Virusni meningitis zboleli	162	197	397	189	158	174	<i>Meningitis viralis</i> cases
umrli	-	-	-	-	-	-	deaths
Virusni meningoencefalitis zboleli	61	43	29	7	17	9	<i>Meningoencephalitis viralis</i> cases
umrli	-	-	-	-	-	-	deaths
Meningokokni meningitis zboleli	17	17	10	7	10	9	<i>Meningitis meningococcica</i> cases
umrli	2	-	-	-	-	-	deaths
Meningokokna sepsa zboleli	2	7	3	2	3	0	<i>Meningococemia</i> cases
umrli	1	-	-	-	1	-	deaths
Pnevmokokni meningitis zboleli	18	10	20	18	13	11	<i>Pneumococcal meningitis</i> No. of cases
umrli	-	1	-	2	1	-	No. of deaths

9.4 Prijavljeni primeri nalezljivih bolezni (nadaljevanje)

Reported cases of infectious diseases (continued)

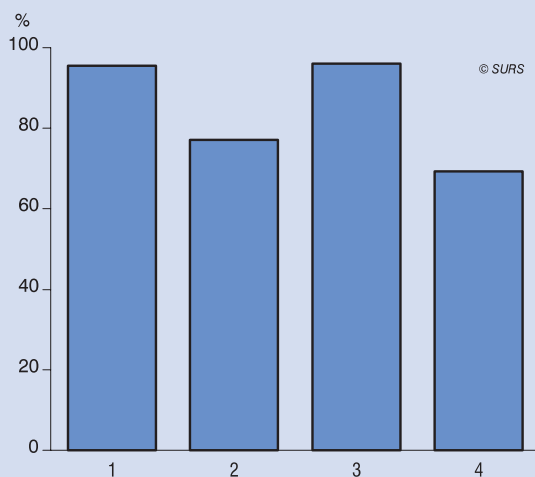
	2005	2008	2009	2010	2011	2012	
Gnojni meningitis, povzročen s h. influenzae b							<i>Purulent meningitis-H. influenzae b</i>
zboleli	3	2	2	1	0	0	cases
umrli	-	-	-	-	-	-	deaths
Gnojni meningitis drugih povzročiteljev							<i>Purulent meningitis - other</i>
zboleli	25	4	6	16	7	10	cases
umrli	1	-	-	-	1	-	deaths
Tuberkuloza							<i>Tuberculosis</i>
zboleli	278	192	175	151	181	126	cases
umrli	9	deaths
Legioneloza							<i>Legionellosis</i>
zboleli	22	48	66	58	45	81	cases
umrli	-	3	4	2	-	1	deaths
Zoonoze							Zoonoses
Vročica Q							<i>Q fever</i>
zboleli	3	0	0	1	0	1	cases
umrli	-	-	-	-	-	-	deaths
Tetanus							<i>Tetanus</i>
zboleli	2	1	0	0	2	1	cases
umrli	-	-	-	-	-	-	deaths
Mikrosporia							<i>Mikrosporia</i>
zboleli	2436	3388	3201	3077	3444	3820	cases
umrli	-	-	-	-	-	-	deaths
Transmisivna obolenja							Transmitted diseases
Klopni meningoencefalitis							<i>Tick borne meningoencephalitis</i>
zboleli	297	251	304	166	247	164	cases
umrli	-	-	1	-	-	-	deaths
Boreliozni meningitis							<i>Lyme meningitis</i>
zboleli	36	27	22	22	25	10	cases
umrli	-	-	-	-	-	-	deaths
Boreliozni eritem							<i>Lyme eritema chr. migrans</i>
zboleli	3995	5092	6220	4917	5552	4897	cases
umrli	-	-	-	-	-	-	deaths
Hemoragična mrzlica z renalnim sindromom							<i>Hemor. fever with renal syndrome</i>
zboleli	20	45	5	17	15	186	cases
umrli	-	1	1	-	-	-	deaths
Malaria							<i>Malaria</i>
zboleli	7	3	7	9	7	7	cases
umrli	-	-	-	-	-	-	deaths
Spolno in s krvjo prenesena obolenja							Sexually transmitted diseases and diseases transmitted by blood
Aids ¹⁾							<i>Aids¹⁾</i>
zboleli	10	11	17	7	15	11	cases
umrli	2	5	2	2	1	1	deaths
Hepatitis B							<i>Hepatitis B</i>
zboleli	19	17	14	7	25	15	cases
umrli	-	-	-	-	-	-	deaths
Diagnosticirane okužbe s HIV ¹⁾							<i>HIV¹⁾</i>
zboleli	38	48	48	35	55	45	cases
umrli	-	-	-	-	-	-	deaths
Sifilis ¹⁾							<i>Sifilis¹⁾</i>
zboleli	37	93	49	40	79	63	cases
umrli	-	-	-	-	-	-	deaths
Gonoreja ¹⁾							<i>Gonorea¹⁾</i>
zboleli	40	43	30	44	25	45	cases
umrli	-	-	-	-	-	-	deaths

1) Število diagnosticiranih primerov.
Number of diagnosed cases.

Vir: Inštitut za varovanje zdravja Republike Slovenije
Source: National Institute of Public Health

**SISTEMATIČNO PREGLEDANI PREDŠOLSKI OTROCI
 V ZDRAVSTVENEM VARSTVU NA PRIMARNI
 RAVNI, 2011**

SYSTEMATICALLY EXAMINED PRE-SCHOOL CHILDREN IN
 HEALTH CARE AT PRIMARY LEVEL, 2011

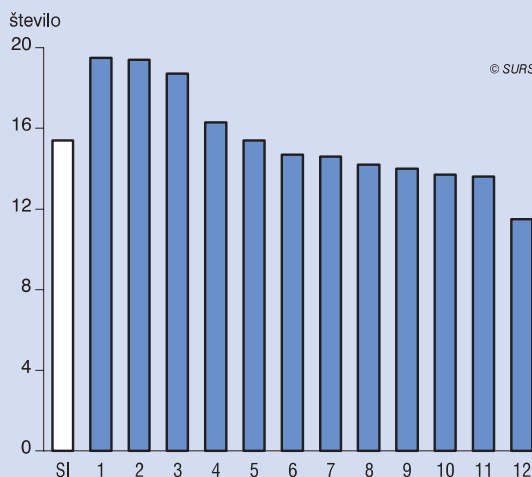


- 1 dojenčki v 1. mesecu starosti / infants aged 1 month
- 2 dojenčki v 12. mesecu starosti / infants aged 12 months
- 3 otroci v starosti treh let / children aged 3
- 4 otroci v starosti petih let / children aged 5

Vir: IVZ, ZUBSTAT, SURS
 Source: IVZ, ZUBSTAT, SURS

**ŠTEVILO KOLEDARSKIH DNI, IZGUBLJENIH ZARADI BOLNIŠKEGA
 STALEŽA, NA ZAPOSLENO OSEBO PO STATISTIČNIH
 REGIJAH, 2012**

NUMBER OF CALENDAR DAYS LOST DUE TO SICK LEAVE PER
 PERSON IN PAID EMPLOYMENT BY STATISTICAL REGIONS, 2012

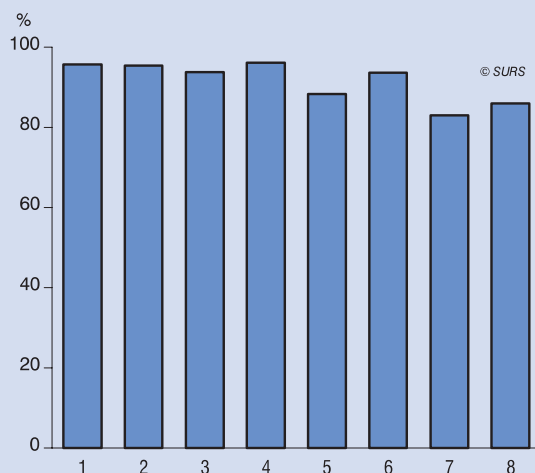


- SI **Slovenija / Slovenia**
- | | | |
|-------------------|---------------------|---------------------|
| 1 Spodnjeposavska | 5 Zasavska | 9 Osrednjeslovenska |
| 2 Podravska | 6 Koroška | 10 Goriška |
| 3 Savinjska | 7 Notranjsko-kraška | 11 Pomurska |
| 4 Obalno-kraška | 8 Jugovzhodna | 12 Gorenjska |

Vir: IVZ, IVZ 3
 Source: IVZ, IVZ 3

**SISTEMATIČNO PREGLEDANI ŠOLSKI NOVINCI IN UČENCI,
 OBVEZNIKI ZA SISTEMATIČNI PREGLED V ŠOLSLEM
 LETU 2010/2011**

EXAMINED NOVICES AND PUPILS WHO HAD TO TAKE A SYSTEMATIC
 HEALTH EXAMINATION IN THE SCHOOL YEAR 2010/2011



Sistematični pregled opravili:
 Passed a systematic health examination:

- 1 šolski novinci / novices
- 2 učenci šol s prilagojenim programom¹ / children in schools with special curriculum¹
- 3 prvošolci / children in the 1st grade
- 4 tretješolci / children in the 3rd grade
- 5 šestošolci / children in the 6th grade
- 6 osmošolci / children in the 8th rd grade
- 7 srednješolci - 1. letnik / pupils in the 1st year of upper secondary school
- 8 srednješolci - 3. letnik / pupils in the 3rd year of upper secondary school

¹ V poročilu o opravljenih sistematičnih pregledih so prikazani samo učenci, ki obiskujejo osnovne šole s prilagojenim predmetnikom in učnim načrtom.
 Children in basic schools with special curriculum only are included in the report.

Vir: Poročilo o izvršenih sistematičnih pregledih šolskih otrok in mladine (Obr. t. 3-04-61), SURS
 Source: Report on systematic health examinations of school children and youth, SURS