



In January 2019, 6% more goods handled in the Port of Koper than in January 2018

Transport, Slovenia, January 2019

In January 2019, 6% more goods were handled in the Port of Koper than in January 2018.

Buses in urban scheduled public transport and in interurban and international transport carried 5% fewer passengers than a year ago

In January 2019, 2.8 million passengers were carried by buses in public scheduled transport (interurban and international), 5% fewer than in January 2018. 53.9 million passenger-kilometres were made by buses in January 2019, 4% fewer than in January 2018.

Buses in urban scheduled public transport carried 5.6 million passengers in January 2019, 5% fewer than in January 2018.

In airport traffic 3% more passengers than a year ago

In January 2019, about 103,100 passengers travelled through Ljubljana Jože Pučnik Airport, 3% more than in January 2018.

The biggest Slovenian air carrier transported about 69,300 passengers, 4% fewer than in January 2018. With its planes 58.8 million passenger-kilometres were performed (i.e. 12% fewer in the same comparison).

In port traffic more goods handled than a year ago

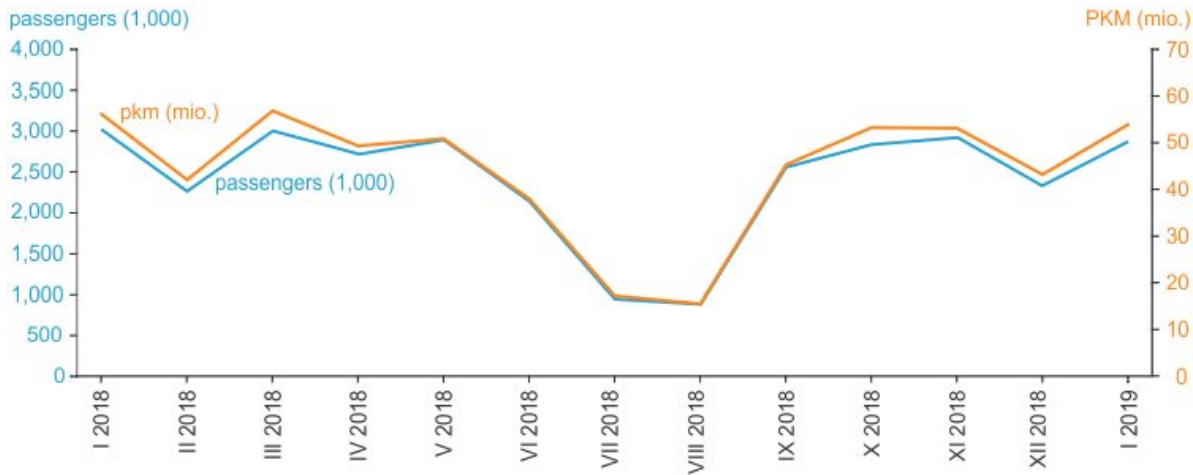
In the Port of Koper 2.3 million tonnes of goods were handled in January 2019, 6% more than in January 2018.

About 6,800 new passenger cars registered for the first time in Slovenia

In January 2019, almost 9,500 passenger cars were registered for the first time in Slovenia, 1% fewer than in January 2018; almost 6,800 of them were new passenger cars.

More detailed data are available in the [SI-STAT Database](#).

Passengers and passenger-kilometres in road public scheduled transport, Slovenia, January 2018–January 2019



Source: SURS

© SURS

Selected data on transport, Slovenia

	I 2019	I 2019 I 2018
	number	index
Road transport		
Passengers in public scheduled transport (1,000) ¹⁾²⁾³⁾	2,876	94.9
Passenger-km in public scheduled transport (mio.) ¹⁾²⁾³⁾	53.9	96.0
Passengers in urban scheduled transport (1,000) ²⁾³⁾	5,612	94.9
Road cross-border entries of passengers from Croatia (1,000)	1,854	101.8
Road cross-border entries of passenger vehicles from Croatia (1,000)	816	100.9
Road motor vehicles, registered for the first time	11,903	100.7
Passenger cars, registered for the first time	9,456	98.7
Maritime transport		
Traffic of passengers in ports ²⁾	12	37.5
Traffic of goods in ports (1,000 t) ²⁾	2,250	106.0
Air transport		
Passengers in air transport (1,000)	69.3	96.3
Passenger-km in air transport (mio.)	58.8	87.5
Traffic of passengers at airports (1,000) ²⁾	103.1	102.8
Traffic of goods at airports (1,000 t) ²⁾	1	96.8

1) Urban scheduled public transport is not included.

2) Data are provisional.

3) The data on passengers and passenger-km in public scheduled transport and data on passengers in urban scheduled transport from September 2016 on have been partly estimated due to the introduction of a new integrated public transport system (IJPP) and the new system of subsidised tickets for public transport (the estimates were prepared by the Ministry of Infrastructure).

Source: SURS

Methodological note

Data on road public scheduled transport for the last 12 months are provisional. With each release the data for the last 12 months can be corrected and supplemented with new data.

Data on port traffic for the last 6 months are provisional. With each release the data for the last 6 months can be corrected and supplemented with new data.

Detailed data



Detailed data and time series are available on the [SI-STAT data portal](#), which enables simple browsing and exporting of data in various formats. Registered users have the possibility to store tables for later browsing and to sign up to be informed when data are updated.

Author/s: Nataša Gostiša, Janez Čampa, Andreja Klavžar, Mateja Kos, Bernardka Furtula, Matej Mlakar

Next release: 15. 4. 2019

Statistical Office of the Republic of Slovenia

Litostrojska cesta 54, 1000 Ljubljana, Slovenia

Information Centre:

phone: +386 1 241 64 04

fax: +386 1 241 53 44

info.stat@gov.si

www.stat.si/en

© Statistični urad Republike Slovenije

Use and publication of data is allowed provided the source is acknowledged.